



SMARTICE SYSTEMS LTD

COLDSTAR™ Slurry-Ice Machine

A new concept for making slurry ice from seawater in a “one-pass” operation. The machine produces slurry ice on inlet water temperature range from 0°C to + 20°C. The given capacity is rated with inlet water temperature of 0°C and a transport water of 0°C. Capacities available from 6 to 50ton of dry ice pr 24 hour. Ammonia or Freon.

Made in stainless steel fully integrated with stainless steel slurry pump and ice removal kit.

Coldstar is approved by PED, DNV and RINA under new pressure vessel code effective June 2002.

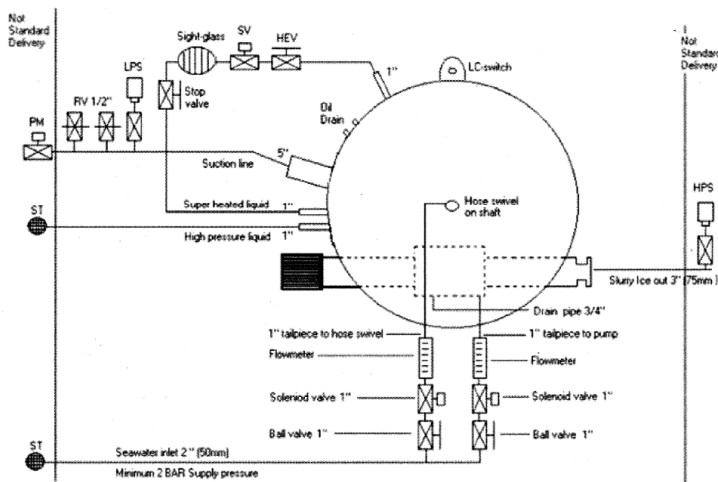
Machine is delivered with following standard:

- Electrical control panel
- Flow-Control panel for water
- Level switch for refrigerants
- Hand expansion valve and solenoid valve in liquid line
- Low pressure switch
- Relief valve



Model	Nominal capacity water temp 0 C	Required refrigeration load at -32 C	Motor (kW)		Refrigerant			Weight netto (kg)	A	B	C	D
			gear	pump	NH3	R22	R404a					
M650	6 500 kg	33.4 kW	0.37	4.0	38	48	48	680	1680	640	1914	1030
M850	8 500 kg	45.0 kW	0.37	4.0	58	68	68	1080	1680	640	1914	1030
M1000	10 000 kg	55.7 kW	0.37	4.0	62	96	96	1370	1870	640	1914	1210
M1250	12 500 kg	68.2 kW	0.37	4.0	79	110	110	1420	2070	640	1914	1210
M1600	16 000 kg	89.3 kW	0.37	4.0	108	139	139	1600	2370	640	1914	1210
M2400	24 000 kg	133.4 kW	0.37	4.0	199	246	246	2800	2370	640	1914	1600

Water and refrigerant connections



Measurement

